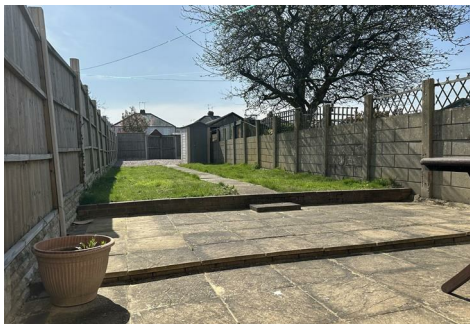




MATTHEW JAMES

Property Services



39 Tonbridge Road, Coventry, CV3 4AW

£200,000

TWO DOUBLE BEDROOMS... OPEN PLAN KITCHEN DINING ROOM... FAMILY SHOWER ROOM... LARGE REAR GARDEN... MODERN SHOWER ROOM... HARDSTANDING TO THE FRONT... PVCU DOUBLE GLAZING... GAS CENTRAL HEATING... CURRENTLY TENANTED BUT WILL BE SOLD AS VACANT... NO UPWARD CHAIN. Located in the heart of Whitley, this lovely two double bedroom mid terraced property needs to be viewed to appreciate everything being offered for sale. Briefly comprising of hardstanding to the front, entrance hallway, through and open plan lounge dining kitchen, two double bedrooms, modern shower room and a larger than average rear garden mainly laid to lawn with paved patio area. Perfect for Jaguar Landrover and for those that use the A45/A46 and the motorway network is just a short drive away. A perfect starter home, investment purchase or for those looking to downsize, it's also being sold as NO UPWARD CHAIN. Does it sound like your next home? Call us now to book your viewing.

Front Garden / Hardstanding



Having tiered steps that lead to the front door with planted beds and a hardstanding.

Entrance Hallway

Having stairs that lead off to the first floor and door leads off to the

Living Area

12'4 x 12'11 (3.76m x 3.94m)



Having a PVCu double glazed bay window to the front elevation, fireplace with built-in cupboards to either sides and open plan access to the:

Open Plan Kitchen Dining Room

15'7 x 9'3 (4.75m x 2.82m)



Having a PVCu double glazed window to the rear elevation, PVCu double glazed French doors leading to the rear patio and garden area, built-in cupboards to the one wall, under stairs storage and a range of base and drawer units with roll top work surface over and modern tiling to all splash prone areas.

First Floor Landing

Having balustrade and doors leading off to:

Bedroom One

14'5 x 11' (4.39m x 3.35m)



Having two PVCu double glazed windows to the front elevation, built-in wardrobes to the one wall with feature cast iron fireplace and over stairs storage cupboard.

Bedroom Two

9'8 x 9'5 (2.95m x 2.87m)



Having a PVCu double glazed window to the rear elevation.

Family Shower Room

6'4 x 5'6 (1.93m x 1.68m)



Having a PVCu double obscure glazed window to the rear elevation, walk-in shower enclosure and vanity built-in wash hand basin and low level flush WC. There is also a heated ladder style radiator and tiling to all splash prone areas.

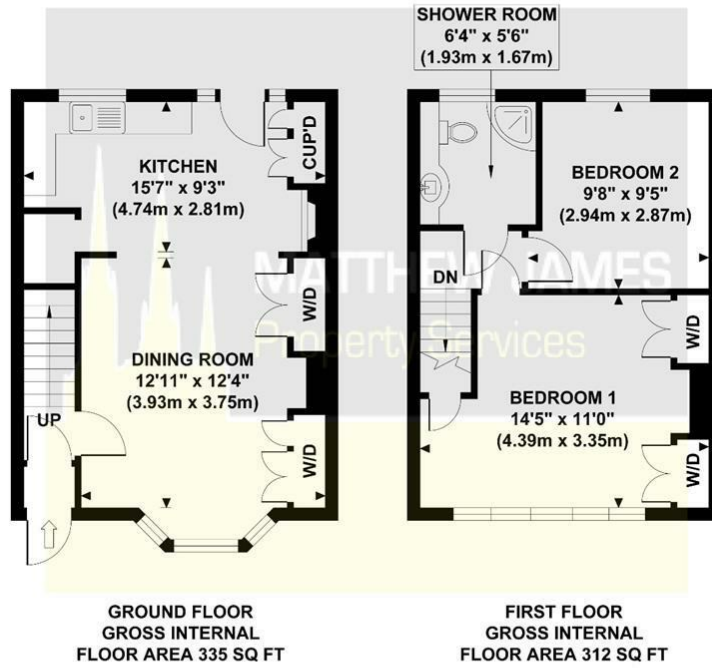
Rear Garden



Having full width patio area and mainly laid to lawn with fenced perimeters and double gates to the rear of the garden.

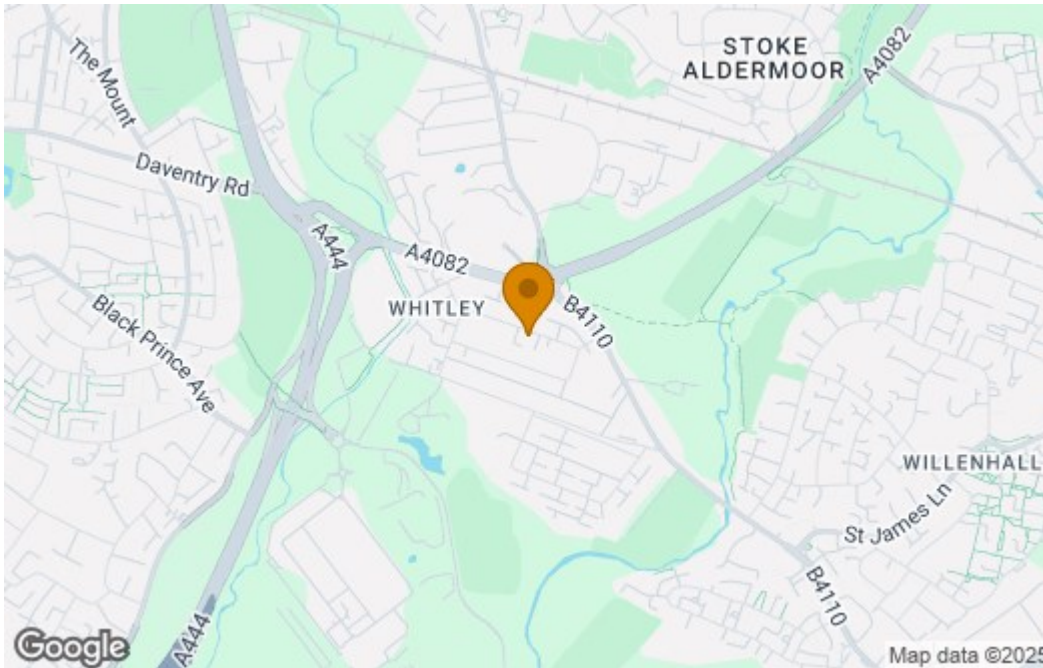
Floor Plan

39 TONBRIDGE ROAD
 Approximate Gross Internal Area
 647 sq ft / 60.10 sq m

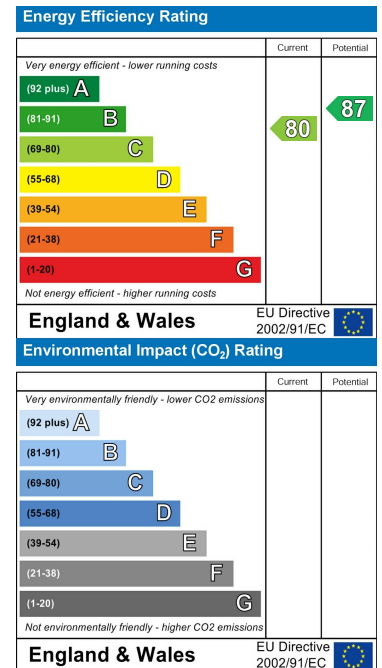


Although every attempt has been made to ensure accuracy, all measurements are approximate and no responsibility is taken for any error, omission, or mid-statement. This floor plan is for illustrative purposes only and not to scale. Measured in accordance to RICS standards.

Area Map



Energy Efficiency Graph



These particulars, whilst believed to be accurate are set out as a general outline only for guidance and do not constitute any part of an offer or contract. Intending purchasers should not rely on them as statements of representation of fact, but must satisfy themselves by inspection or otherwise as to their accuracy. No person in this firm's employment has the authority to make or give any representation or warranty in respect of the property.

CONTACT INFORMATION

24a Warwick Row, Coventry CV1 1EY

02477 170170

info@matthewjames.uk.com

www.matthewjames.uk.com

Facebook

Twitter